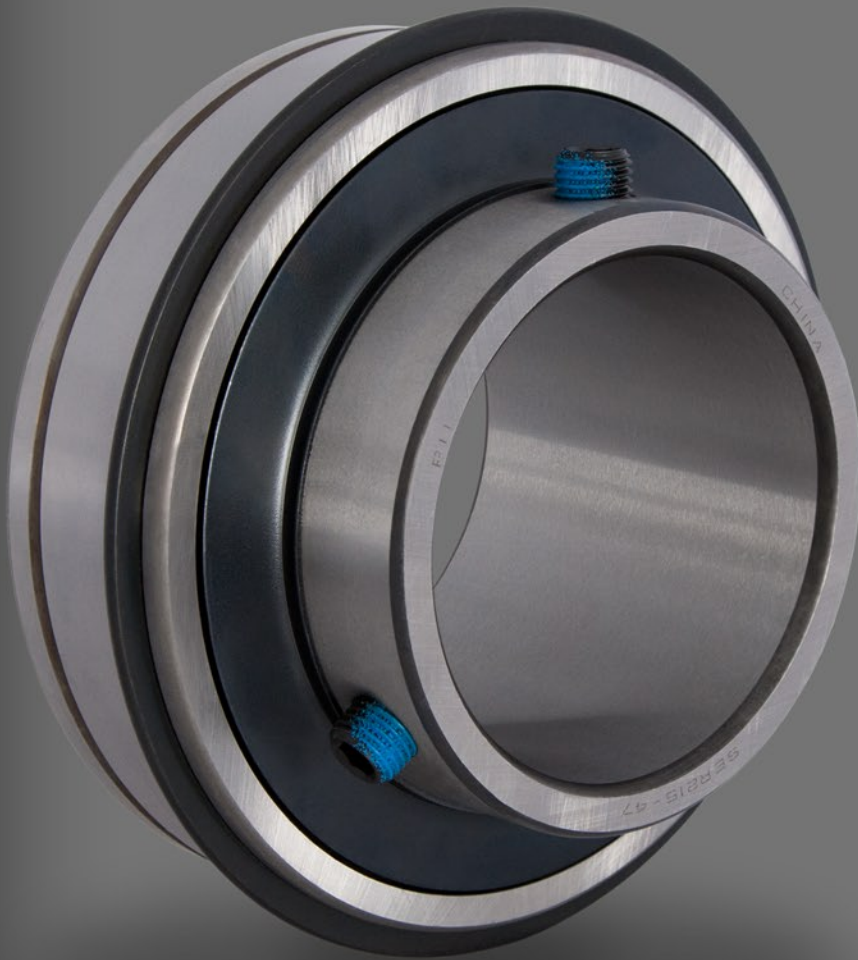




ER (SER) Series Bearing Inserts



Wide Inner Ring

- SAE 52100 Chrome Steel
- Zone Annealed
- Provides Greater Surface Contact than Narrow Ring Inserts

Snap Ring

- Provides Flush Mounting Surface
- Prevents Push-Through During Installation

Double Set Screws @ 120°

- Provides Balanced Locking
- Thread Locker Included
- Reduces Vibration

Dual seals

- Protects Bearing from Contaminants
- Extends Bearing Life

Grease Groove & Oil Hole

- Allows Bearing to be Relubricated
- Extends Bearing Life (when properly lubricated)

Pacific's ER series bearings are built to last and provide a superior option for a variety applications, such as live rollers and idlers.

Pacific Industries, Inc.

18200 SW Teton Avenue · Tualatin · Oregon · 97062

Phone · 800.821.8431

Fax · 866.552.5009

piisales@pac85.com

www.pacificindustries.com

